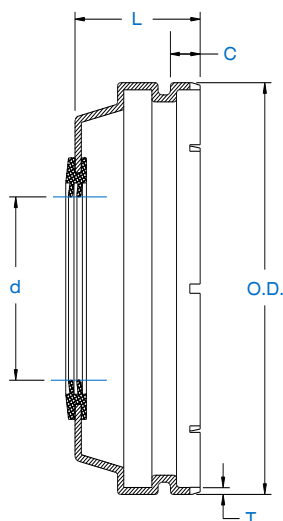


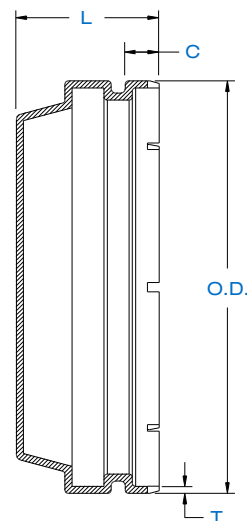
END CAPS



OPEN



CLOSED



End Cap Number	Shaft Dia.	Dimensions in. mm			
	d in. mm.	O.D.	L	T	C
SS 201	12				
SS 201-8	1/2				
SS 202	15	2.136	0.84	0.031	0.236
SS 202-10	5/8	54.25	21.4	0.80	6.00
SS 203	17				
SS 204-12	3/4				
SS 204	20				
SS 205-14	7/8				
SS 205-15	15/16	2.372	0.92	0.031	0.236
SS 205	25	60.25	23.5	0.80	6.00
SS 205-16	1				
SS 206-17	1 1/16				
SS 206-18	1 1/8	2.770	1.00	0.031	0.283
SS 206	30	70.35	25.5	0.80	7.20
SS 206-19	1 3/16				
SS 206-20	1 1/4				
SS 207-20	1 1/4				
SS 207-21	1 5/16	3.163	1.08	0.031	0.283
SS 207-22	1 3/8	80.35	27.5	0.80	7.20
SS 207	35				
SS 207-23	1 7/16				
SS 208-24	1 1/2	3.473	1.19	0.031	0.283
SS 208-25	1 9/16	88.22	30.3	0.80	7.20
SS 208	40				
SS 209-26	1 5/8				
SS 209-27	1 11/16	3.749	1.19	0.031	0.401
SS 209-28	1 3/4	95.22	30.3	0.80	10.20
SS 209	45				
SS 210-30	1 7/8				
SS 210-31	1 15/16	3.940	1.28	0.039	0.401
SS 210	50	100.1	32.5	1.00	10.20
SS 210-32	2				
SS 211-32	2				
SS 211-34	2 1/8	4.335	1.46	0.039	0.401
SS 211	55	110.1	37.0	1.00	10.20
SS 211-35	2 3/16				
SS 212-36	2 1/4				
SS 212	60	4.728	1.56	0.039	0.401
SS 212-38	2 3/8	120.1	39.5	1.00	10.20
SS 212-39	2 7/16				

End Cap Number	Dimensions in. mm			
	O.D.	L	T	C
SS 201 CLOSED				
SS 202 CLOSED	2.136	0.84	0.031	0.236
SS 203 CLOSED	54.25	21.4	0.80	6.00
SS 204 CLOSED				
SS 205 CLOSED	2.372	0.92	0.031	0.236
	60.25	23.5	0.80	6.00
SS 206 CLOSED	2.770	1.00	0.031	0.283
	70.35	25.5	0.80	7.20
SS 207 CLOSED	3.163	1.08	0.031	0.283
	80.35	27.5	0.80	7.20
SS 208 CLOSED	3.473	1.19	0.031	0.283
	88.22	30.3	0.80	7.20
SS 209 CLOSED	3.749	1.19	0.031	0.401
	95.22	30.3	0.80	10.20
SS 210 CLOSED	3.940	1.28	0.039	0.401
	100.1	32.5	1.00	10.20
SS 211 CLOSED	4.335	1.46	0.039	0.401
	110.1	37.0	1.00	10.20
SS 212 CLOSED	4.728	1.56	0.039	0.401
	120.1	39.5	1.00	10.20

MARINER®